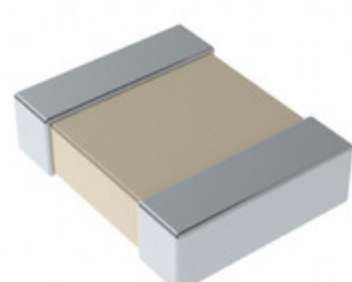


C1210X222G1HACAUTO



Part Number: [C1210X222G1HACAUTO](#)
Manufacturer: [KEMET](#)
Description: CAP CER 1210 2.2NF 100V ULTRA ST
Data sheet: [FT-CAP, Ultra Stable, X8R Dielectric](#)

RoHS Status: Lead free / RoHS Compliant
Ship From: Hong Kong
Shipment Way: DHL/Fedex/TNT/UPS/EMS

Images are for reference only.
 See Product Specifications for product details.
 Buy C1210X222G1HACAUTO with confidence from
 Component-World.HK, 1 Year Warranty

[Request For Quotation](#)

PRODUCT PARAMETER

Part Number	C1210X222G1HACAUTO	Manufacturer	KEMET
Description	CAP CER 1210 2.2NF 100V ULTRA ST	Lead Free Status / RoHS Status	Lead free / RoHS Compliant
Quantity Available	406685 pcs	Data sheet	FT-CAP, Ultra Stable, X8R Dielectric
Category	Capacitors	Voltage - Rated	100V
Tolerance	±2%	Thickness (Max)	0.043" (1.10mm)
Temperature Coefficient	X8R	Size / Dimension	0.130" L x 0.102" W (3.30mm x 2.60mm)
Series	FT-CAP	Ratings	AEC-Q200
Packaging	Tape & Reel (TR)	Package / Case	1210 (3225 Metric)
Operating Temperature	-55°C ~ 150°C	Mounting Type	Surface Mount, MLCC
Moisture Sensitivity Level (MSL)	1 (Unlimited)	Manufacturer Standard Lead Time	36 Weeks
Lead Style	-	Lead Spacing	-
Lead Free Status / RoHS Status	Lead free / RoHS Compliant	Height - Seated (Max)	-
Features	Low ESL, Soft Termination	Failure Rate	-
Detailed Description	2200pF ±2% 100V Ceramic Capacitor X8R 1210 (3225 Metric)	Capacitance	2200pF
Applications	Automotive, Boardflex Sensitive		

Component-World.com is a Reliable Stocking Distributor of Electronic Components. We specialize in all KEMET series electronic components. We have 406685 pieces of KEMET C1210X222G1HACAUTO in stock available now. Request a quote from electronics components distributor at Component-World.com, our sales team will contact you within 24 hours.
 RFQ Email: info@Components-World.com

RELATED PRODUCTS

	Part#: C1210X222F3HAC7800 Description: CAP CER 1210 2.2NF 25V ULTRA STA	Manufacturers: KEMET	RFQ
	Part#: C1210X222F3HACAUTO Description: CAP CER 1210 2.2NF 25V ULTRA STA	Manufacturers: KEMET	RFQ
	Part#: C1210X222J3HAC7800 Description: CAP CER 1210 2.2NF 25V ULTRA STA	Manufacturers: KEMET	RFQ
	Part#: C1210X222G8HACAUTO Description: CAP CER 1210 2.2NF 10V ULTRA STA	Manufacturers: KEMET	RFQ
	Part#: C1210X222F8HACAUTO Description: CAP CER 1210 2.2NF 10V ULTRA STA	Manufacturers: KEMET	RFQ
	Part#: C1210X222F5HACAUTO Description: CAP CER 1210 2.2NF 50V ULTRA STA	Manufacturers: KEMET	RFQ
	Part#: C1210X222F1HACAUTO Description: CAP CER 1210 2.2NF 100V ULTRA ST	Manufacturers: KEMET	RFQ
	Part#: C1210X222F8HAC7800 Description: CAP CER 1210 2.2NF 10V ULTRA STA	Manufacturers: KEMET	RFQ
	Part#: C1210X222G4HAC7800 Description: CAP CER 1210 2.2NF 16V ULTRA STA	Manufacturers: KEMET	RFQ
	Part#: C1210X222G4HACAUTO Description: CAP CER 1210 2.2NF 16V ULTRA STA	Manufacturers: KEMET	RFQ
	Part#: C1210X222F4HACAUTO Description: CAP CER 1210 2.2NF 16V ULTRA STA	Manufacturers: KEMET	RFQ
	Part#: C1210X222G1HAC7800 Description: CAP CER 1210 2.2NF 100V ULTRA ST	Manufacturers: KEMET	RFQ
	Part#: C1210X222G5HACAUTO Description: CAP CER 1210 2.2NF 50V ULTRA STA	Manufacturers: KEMET	RFQ
	Part#: C1210X222G8HAC7800 Description: CAP CER 1210 2.2NF 10V ULTRA STA	Manufacturers: KEMET	RFQ
	Part#: C1210X222J1HACAUTO Description: CAP CER 1210 2.2NF 100V ULTRA ST	Manufacturers: KEMET	RFQ
	Part#: C1210X222G3HAC7800 Description: CAP CER 1210 2.2NF 25V ULTRA STA	Manufacturers: KEMET	RFQ
	Part#: C1210X222G3HACAUTO Description: CAP CER 1210 2.2NF 25V ULTRA STA	Manufacturers: KEMET	RFQ
	Part#: C1210X222G5HAC7800 Description: CAP CER 1210 2.2NF 50V ULTRA STA	Manufacturers: KEMET	RFQ
	Part#: C1210X222F5HAC7800 Description: CAP CER 1210 2.2NF 50V ULTRA STA	Manufacturers: KEMET	RFQ
	Part#: C1210X222F4HAC7800 Description: CAP CER 1210 2.2NF 16V ULTRA STA	Manufacturers: KEMET	RFQ

Related keywords for C1210X222G1HACAUTO

KEMET C1210X222G1HACAUTO	C1210X222G1HACAUTO distributor	C1210X222G1HACAUTO supplier	C1210X222G1HACAUTO price
C1210X222G1HACAUTO download datasheet	C1210X222G1HACAUTO datasheet	C1210X222G1HACAUTO stock	buy C1210X222G1HACAUTO
KEMET C1210X222G1HACAUTO	Kemet [MIL] C1210X222G1HACAUTO		